

257

Annexur - 4

1) PRIMARY JAW CRUSHER (1C-1)

Name Plate Specification for 160 KW, 6600 Volt, 3 phase, Slip Ring Induction Motor

Make - Crompton Greaves

KW (H.P): 160 (214)

IS: 235 : 1996

RPM: 988

Frame - TPR 400 D

Ins. Class: F

Enclosure: CACA (IP 55),

M/C No: 2003241 / 1

Freq: 50 Hz

Weight: 4500 Kg

Volts: 6600

Amp: 20

Rv: 350 V

RA: 270 A

Amb: 50 °C

Alt.: 1000 m

Duty: S1

Rating MCR GD² (Motor): 42 Kg / cm²

Full load Efficiency: 92%

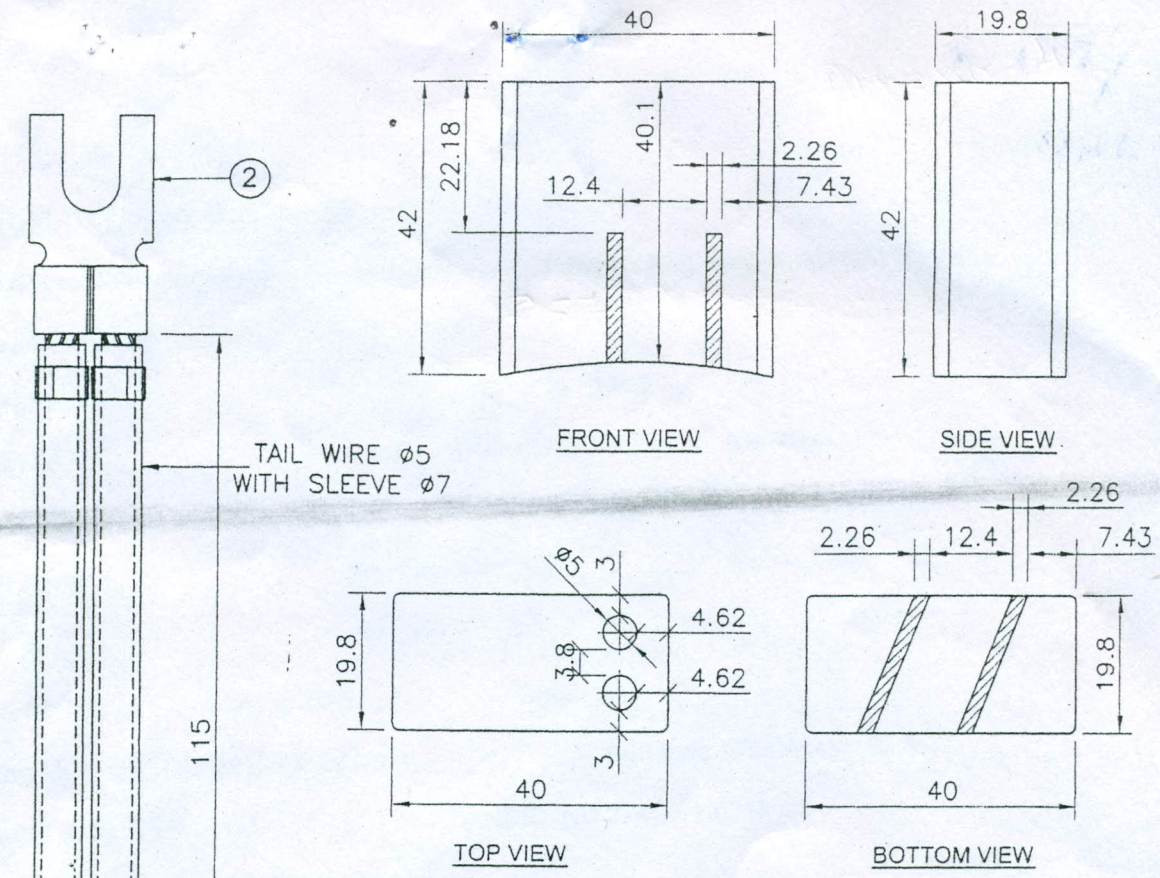
Bearing (DE): NU224 C3

NDE: NU 224C3 + 6218 C3

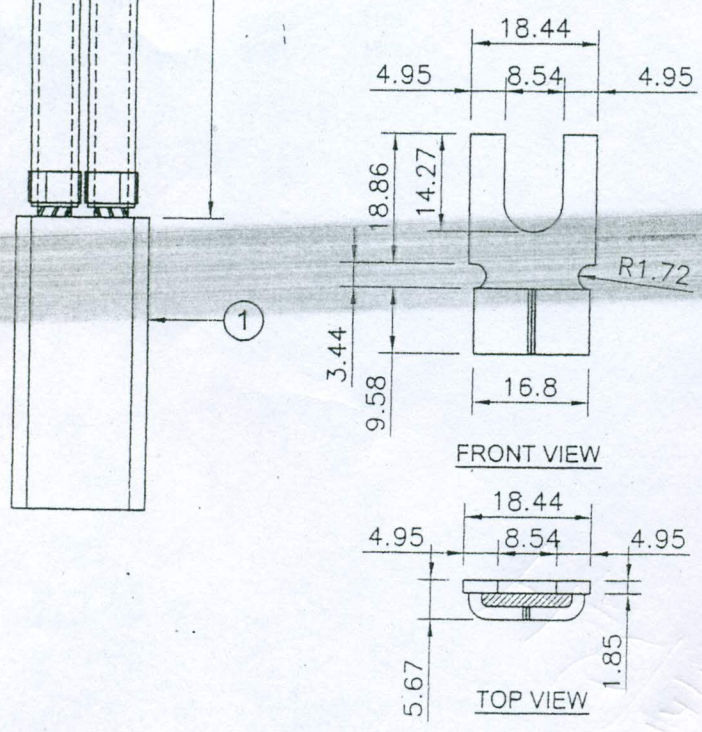
Lubricant: Servogen 2 of IOC or Equivalent

Relubrication:	DE	5000	Hrs
	NDE	6000	Hrs

Ref




PART NO 1



PART NO 2

RoX

TYPE : M 16 EX
FRAME SIZE : TPR 355 D

 URANIUM CORPORATION OF INDIA LTD. TURAMDIH MILL (A GOVT. OF INDIA ENTERPRISE, DEPT. OF ATOMIC ENERGY)			TITLE	
DRN.	Rajesh	21.09.13	CARBON BRUSH FOR 160 KW / 132 KV SLIPRING MOTOR	
CHECKED	S.C. Haldar			
APPROVED	G. DHAR			
SCALE	N.T.S.			
DIMENSIONS IN MM			DRG.NO.- MILL/TMD/ELECT.-39	

REV. 01